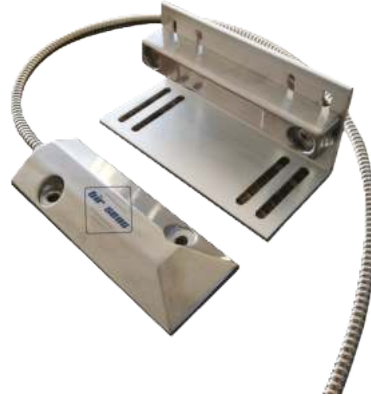




BS 2023

Industrial Door Sensor

CE



Although it is recommended for room doors, it has a sensing distance of 7.62 cm. It is resistant to impacts and is rhodium plated.

TECHNICAL SPECIFICATIONS

Operating Temperature: 32° F to 120° F (0° C to 49° C)

Spacing: 3 in (76.2 mm) Max

Hermetically Sealed Reed Switch on Housing made of Heavy Impact Aluminum "Flat Plate"

Rhodium Over Gold Reed Switch

High quality magnet, L-shaped mounting bracket

WEIGHT

156 g

CONNECTION

Connection: 27" 22-gauge wire, covered, Armored Cable

Output: Normally Closed and With Magnet

Contact Current: 28VDC - 500mA - 10W

ALERT, WARNING & NOTIFICATION

Written and illuminated warning via LCD (*1)

Email (with management software)

SMS and Phone Call (through SMS Module)

Audible alert via management software

Audible - Visual warning module (siren)(*2)

Sensaway Mobile App Notification

MONITORING & MANAGEMENT SOFTWARE

Sensaway Monitoring & Management Software

(*1) It works with BirSens modules.

(*2) It works with compatible BirSens modules & Siren.